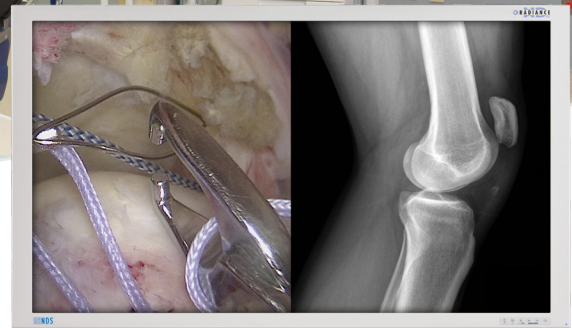




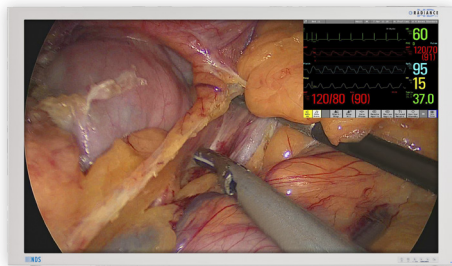
**RADIANCE®**  
G2



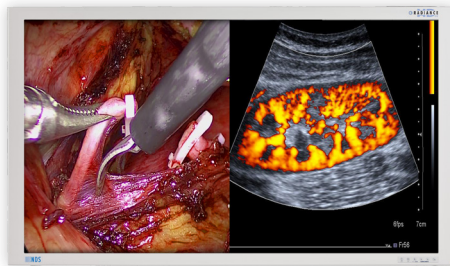
The Radiance® G2 55" display utilizes the latest LED backlight and 120 Hz refresh rate technology. It also features NDS patented Color Correction Technology (CCT), which enables the display to conform to the BT.709 HDTV color standard. The precise color calibration achieved using CCT ensures consistent color response across the entire family of Radiance® G2 displays. Surgeons can now have the clinical confidence that the endoscopic image they view in different rooms and on different size displays are exactly the same. The Radiance® G2 55" comes standard with two 3G-SDI inputs and an embedded single-fiber input. Plus it is compliant with both the 3rd Edition medical safety standard and RoHS requirements, making it a future-proof investment.

- The Latest High-End 55" Surgical Display
- Industry-Leading LED Backlight and 120 Hz Technology
- Color Correction Technology (CCT)
- Comes Standard with Dual 3G-SDI and Single-Fiber Inputs

## Endoscopy & Vital Signs



## Endoscopy & Ultrasound

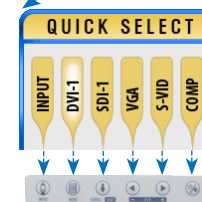


## Fluoroscopy & PACS Imaging



### PERFORMANCE / FEATURES

LCD Panel	Active Matrix TFT with In-Plane-Switching, LED Backlight 120 Hz
Output Luminance (Max)	450 cd/m <sup>2</sup>
Output Luminance (Calibrated)	350 cd/m <sup>2</sup> (BT.709)
Resolution (H x V)	1920 x 1080 (Full HD)
Single-Fiber Input (LC x 1)	Standard Feature
3G-SDI Capability	Comes Standard with Two 3G-SDI Inputs
Full Multi-Modality Support	Yes
Gamma	1.8, 2.0, 2.2, 2.4, 2.6, Color-Corrected Video Gamma, and PACS
"Quick Select" Feature	New Interface for Quickly Switching Inputs



New "Quick Select" Softkeys

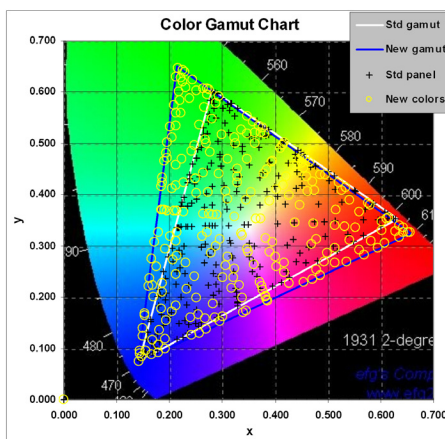
### REGULATORY COMPLIANCE

ANSI/AAMI ES60601-1, CAN/CSA C22.2 No. 60601-1, Conflict Minerals, FCC Part 15, EN60601-1, EN60601-1-2, CE, MDD 93/42/EEC, 2007/47/EC, REACH, RoHS-2, WEEE, Class I Medical Device, CCC

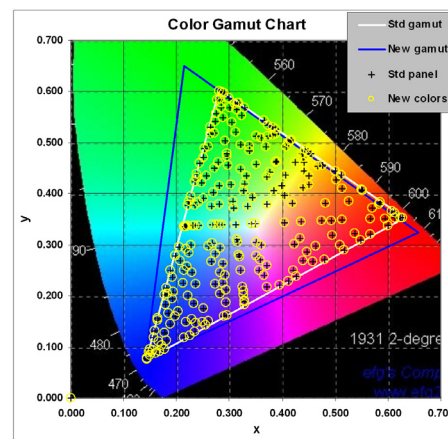
### COLOR CORRECTION TECHNOLOGY (CCT)

NDS Color Correction Technology (CCT) is a patented dynamic color calibration solution. Pixel-by-pixel color response correction is performed in real-time, resulting in a display that conforms to the BT.709 HDTV color standard. The clinical benefit for surgeons is superior color consistency across all displays, no matter which operating room they are installed in, or which cart they are on.

#### Without Color Correction Technology



#### With NDS Color Correction Technology



ISO 13485  
FDA Registration # 2954921

#### Global Headquarters

www.ndssi.com  
5750 Hellyer Ave  
San Jose, CA 95138  
USA  
+1 408 776 0085  
info@ndssi.com

#### Europe

Novanta Europe GmbH  
Parkring 57-59  
85748 Garching  
Germany  
+49 89 31 707 100  
info.novanta-europe@novanta.com

#### Asia Pacific

Novanta Japan  
East Square Omori  
6-20-14 Minamioi, Shinagawa-ku  
Tokyo 140-0013  
Japan  
+81 3 5753 2466  
info@ndssi.com

Oriental Media Center  
Suite 2302, Tower C  
No.4, Guang Hua Road  
Chao Yang District  
Beijing, 100026  
China  
+86 10 8559 7859  
info@ndssi.com