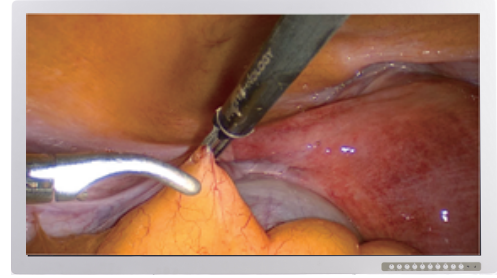


Slim LED Backlight Surgical Grade Monitor

Optik View 42" FHD surgical medical display LCD monitor conforms to major international medical certifications for safety and quality assurance while providing crisp, clear 1920x1080 resolution. This 42" monitor is the precise tool the practitioner needs to make the sharpest analysis and the most reliable diagnosis, while also producing the truest image of an operation in real time. The 42" monitor also offers multi interfaces like 3G SDI, HDMI, Display Port and BNC inputs enabling not only the latest technology but also providing backwards compatibility so the user will have a consistent, reliable functionality that can adapt to diverse medical environments. IPX1 sealed front with AR glass, along with fan-less, vent-less back cover, makes this the perfect monitor for surgical operating room.



Model Name	SC4211	
LCD Panel	Type	TFT color, active matrix (super MVA technology)
	Native Resolution	1920 x 1080
	Active Screen Size	42.02 inches diagonal
	Display Area	930.24 (H) x 523.26 (V) mm
	Pixel Pitch	0.1615 mm x 0.4845 mm
	Viewing Angle	176 degrees (H) / 176 degrees (V)
	Response Time	8 ms gray-gray (average)
Visual Characteristics	Brightness	500 cd/m ² (Max)
	Contrast Ratio	4000:1 (Max)
	Display Colors	10 bit colors
Analog / Digital Input	DVI	DVI-I 29 pin x 1 (DVI-A/DVI-D)
	HDMI	HDMI x1
	VGA	D-Sub 15-pin mini x 1 (RGB Analog)
	Display Port	DP x 1
	S-Video & Composite	4-pin Mini-Din x1; BNC x 1 (Optional)
	RGBS/YPbPr	BNC x5 (Optional)
	3G-SDI	BNC x1 (Optional)
Analog / Digital Output	RGBS/YPbPr	BNC x3 (Optional)
	3G-SDI	BNC x1 (Optional)
Control Input	Serial Remote	RS-232, D-Sub 9-pin mini x 2 (1 x IN, 1 x OUT)
Features	Multi-Diagnostic Mode (MDM) Selection	DICOM, DICOM-CLEAR, DICOM-BLUE, LIGHT BOX, TEXT, USER
	Luminance Stabilization	Embedded auto luminance stabilizer (ALS)
	OSD Languages	English, Chinese, French, German, Italian, Spanish, Japanese
	Plug and Play	Supports VESA DDC2B and DDC/CI
Power Requirements	Power Supply	AC 100-240V, 50 ~ 60 Hz
	Power Consumption	Less than 100 Watts
	Power Save	Less than 1 Watts
Physical Characteristics	Color	White or Black
	Protection Shield	AR protective glass
	Waterproofing Level	IPX1
	Dimensions (W x H x D)	With stand: 1004 x 653.5 x 227.31 mm Without stand: 1004 x 601 x 74.15 mm
	Weight	With stand: 32 kg Without stand: 29.5 kg
Environmental	Mounting	400 x 200 mm VESA mounting standard
	Operating Temperature	0°C to + 35°C (32°F to 95°F)
Others	Operating Humidity	30% to 75%
	Certifications and Compliances	cTUVus (ANSI/AAMI ES 60601-1, CAN/CSA C22.2 No. 60601-1), CB (IEC 60601-1, IEC 60950-1), TUV/RH (EN 60601-1), CE, FCC, BSMI, CCC, VCCI, RoHS, WEEE
	Supplied Accessories	AC power cord, DVI-D to DVI-D cable, S-Video cable, remote control unit, user's manual (CD-ROM), warranty card

