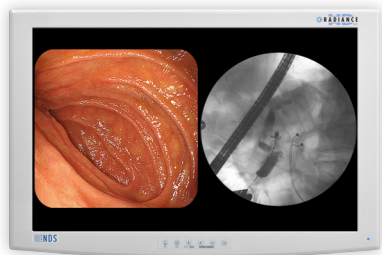


RADIANCE
G2

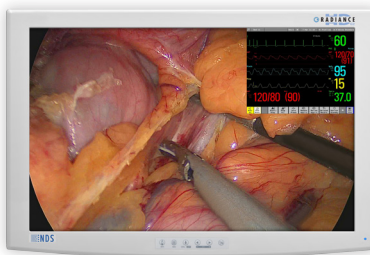
The Radiance® G2 24" display is the first full-featured 24" surgical display to utilize the latest LED backlight technology. It also features NDSsi's patented Color Correction Technology (CCT), which enables the display to conform to the BT.709 HDTV color standard. The precise color calibration achieved using CCT ensures consistent color response across the entire family of Radiance® G2 displays. Surgeons can now have the clinical confidence that the endoscopic image they view in different rooms and on different size displays are exactly the same. The Radiance® G2 24" is equipped with two 3G-SDI inputs and an optional single-fiber input. Plus it is compliant with both the 3rd Edition medical safety standard and RoHS requirements, making it a future-proof investment.

- The Latest High-End 24" Surgical Display
- Industry Leading LED Backlight Technology
- Color Correction Technology (CCT)
- Supports 3G-SDI and Optional Single-Fiber Inputs

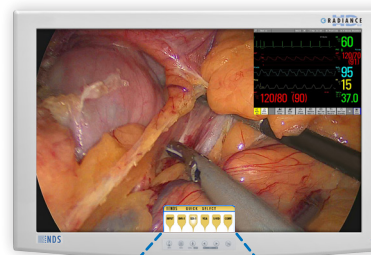
Endoscopy & Fluoroscopy



Endoscopy & Ultrasound

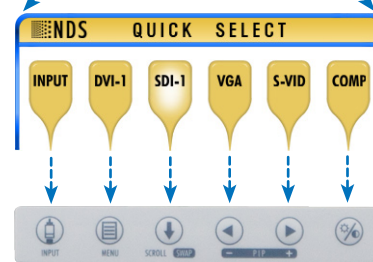


Endoscopy & Vital Signs



PERFORMANCE / FEATURES

LCD Panel	Active Matrix TFT with In-Plane-Switching, LED Backlight
Output Luminance (Max)	300 cd/m ²
Output Luminance (Calibrated)	250 cd/m ² (BT.709)
Resolution (H x V)	1920 x 1200 (WUXGA)
Single-Fiber Input (LC x 1)	Optional Feature
3G-SDI Capability	Comes Standard with Two 3G-SDI Inputs
Full Multi-Modality Support	Yes
Gamma	1.8, 2.0, 2.2, 2.4, 2.6, Color-Corrected Video Gamma, and PACS
"Quick Select" Feature	New Interface for Quickly Switching Inputs



New "Quick Select" Softkeys

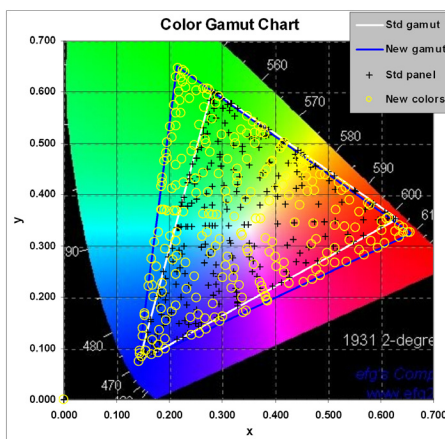
REGULATORY COMPLIANCE

ANSI/AAMI ES60601-1, CAN/CSA C22.2 No. 60601-1, Conflict Minerals, FCC Part 15, EN60601-1, EN60601-1-2, CE, MDD 93/42/EEC, 2007/47/EC, REACH, RoHS-2, WEEE, Class I Medical Device, CCC, IP 32

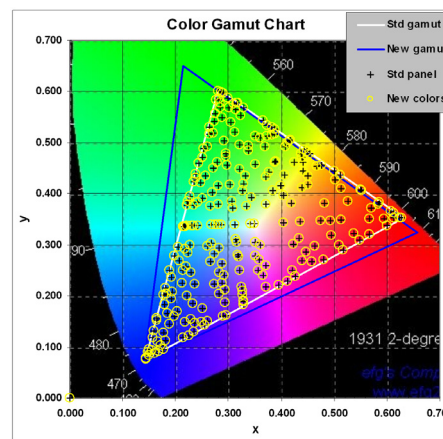
COLOR CORRECTION TECHNOLOGY (CCT)

NDSsi's Color Correction Technology (CCT) is a patented dynamic color calibration solution. Pixel-by-pixel color response correction is performed in real-time, resulting in a display that conforms to the BT.709 HDTV color standard. The clinical benefit for surgeons is superior color consistency across all displays, no matter which operating room they are installed in, or which cart they are on.

Without Color Correction Technology



With NDSsi Color Correction Technology



ISO 9001:2008 and ISO 13485:2003;
FDA Registration # 2954921

Global Headquarters

www.ndssi.com
5750 Hellyer Ave
San Jose, CA 95138
USA
+1 408 776 0085
info@ndssi.com

Europe

Novanta Europe GmbH
Münchner Strasse 2A
82152 Planegg
Germany
+49 89 31 707 100
info.novanta-europe@novanta.com

Asia Pacific

Novanta Japan
East Square Omori
6-20-14 Minamioi, Shinagawa-ku
Tokyo 140-0013
Japan
+81 3 5753 2466
info@ndssi.jp

Oriental Media Center
Suite 2302, Tower C
No.4, Guang Hua Road
Chao Yang District
Beijing, 100026
China
+86 10 8559 7859
info@ndssi.com.cn