



ConductOR™ is a revolutionary medical-grade video integration appliance that enables routing of virtually any medical imaging source to the surgeon's field of view and beyond. This unique solution provides matrix switching functionality within the OR, and HD video streaming to enable telemedicine applications beyond the OR. It addresses the needs of the surgical suite by delivering the functionality of a typical video rack in one medical-grade appliance. The customizable and modular design allow you to only purchase the inputs and output you need, saving cost. Each of the display outputs scales and converts all signals to an HD digital format, dramatically simplifying the cabling requirements, making installation simple.

❖ Medical-Grade, Video Routing Solution

❖ Matrix Switching Functionality Allows Any Input to be Routed to Any Output

❖ Built-In Touch Screen Allows Easy Control

❖ Modular Design Enables Flexible Configurations

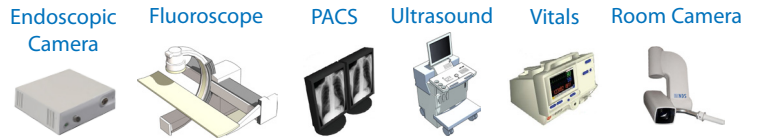
❖ Built-In HD Video Streaming Over IP Networks

❖ Picture-In-Picture Output Capable

### Applications Diagram



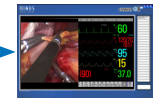
Built-In Touch Screen



INPUTS

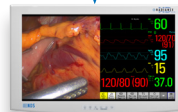


ETHERNET



Remote Location

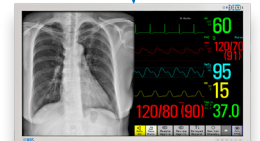
DISPLAY OUTPUTS



Cart-Mounted Display



Boom-Mounted Display



Wall-Mounted Display

#### FULLY CUSTOMIZABLE USER INTERFACE

Allows for custom naming of source selection buttons, streaming presets, and system configuration presets. All stored on a USB drive, making serviceability easy.

Customizable Input Names	Inputs Can be Renamed Using Front Touch Panel
9 Available System Presets	Easily Store/Recall All User-Definable Settings
USB Storage Device Port	Save/Recall All System Presets via USB Storage

#### SUPPORTED MODALITIES / APPLICATIONS

3G-SDI, HD-RGBS / YP <sub>b</sub> P <sub>r</sub>	HD Endoscopy
SDI, RGBS, YP <sub>b</sub> P <sub>r</sub>	SD Endoscopy
Sync-On-Green (SOG)	Fluoroscopy, Angiography
DVI	HD Endoscopy, PACS Imaging, MRI, CT, Vital Signs
S-Video, Composite	Fluoroscopy, SD Endoscopy, Ultrasound
VGA	PACS Imaging, MRI, Endoscopy, Ultrasound, Angiography, Vital Signs

#### COMPLIANCE & CERTIFICATIONS

ANSI/AAMI ES60601-1, CAN/CSA C22.2 No. 60601-1, Conflict Minerals, FCC Part 15, EN60601-1, EN60601-1-2, CE, MDD 93/42/EEC, 2007/47/EC, REACH, RoHS-2, WEEE, Class I Medical Device, CQC



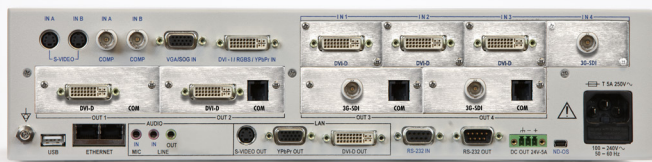
#### Input Modules

- 90T1005 - DVI-D
- 90T1007 - 3G-SDI
- 90T1014 - VGA / RGBs / SoG / YPbPr
- 90T1015 - Composite / S-Video

#### Output Modules

- 90T1006 - DVI-D
- 90T1008 - 3G-SDI
- 90T1009 - 4-Fiber

90T0007 - ConductOR Base Unit



Rear Panel



ISO 9001:2008 and ISO 13485:2003;  
FDA Registration # 2954921

#### Global Headquarters

www.ndssi.com  
5750 Hellyer Ave  
San Jose, CA 95138  
USA  
+1 408 776 0085  
info@ndssi.com

#### Europe

Novanta Europe GmbH  
Münchner Strasse 2A  
82152 Planegg  
Germany   
+49 89 31 707 100  
info.novanta-europe@novanta.com

#### Asia Pacific

Novanta Japan  
East Square Omori  
6-20-14 Minamioi, Shinagawa-ku  
Tokyo 140-0013  
Japan  
+81 3 5753 2466  
info@ndssi.jp

Oriental Media Center  
Suite 2302, Tower C  
No.4, Guang Hua Road  
Chao Yang District  
Beijing, 100026  
China  
+86 10 8559 7859  
info@ndssi.com.cn