

TOTOKU

5 Megapixel 21.3" Color Display

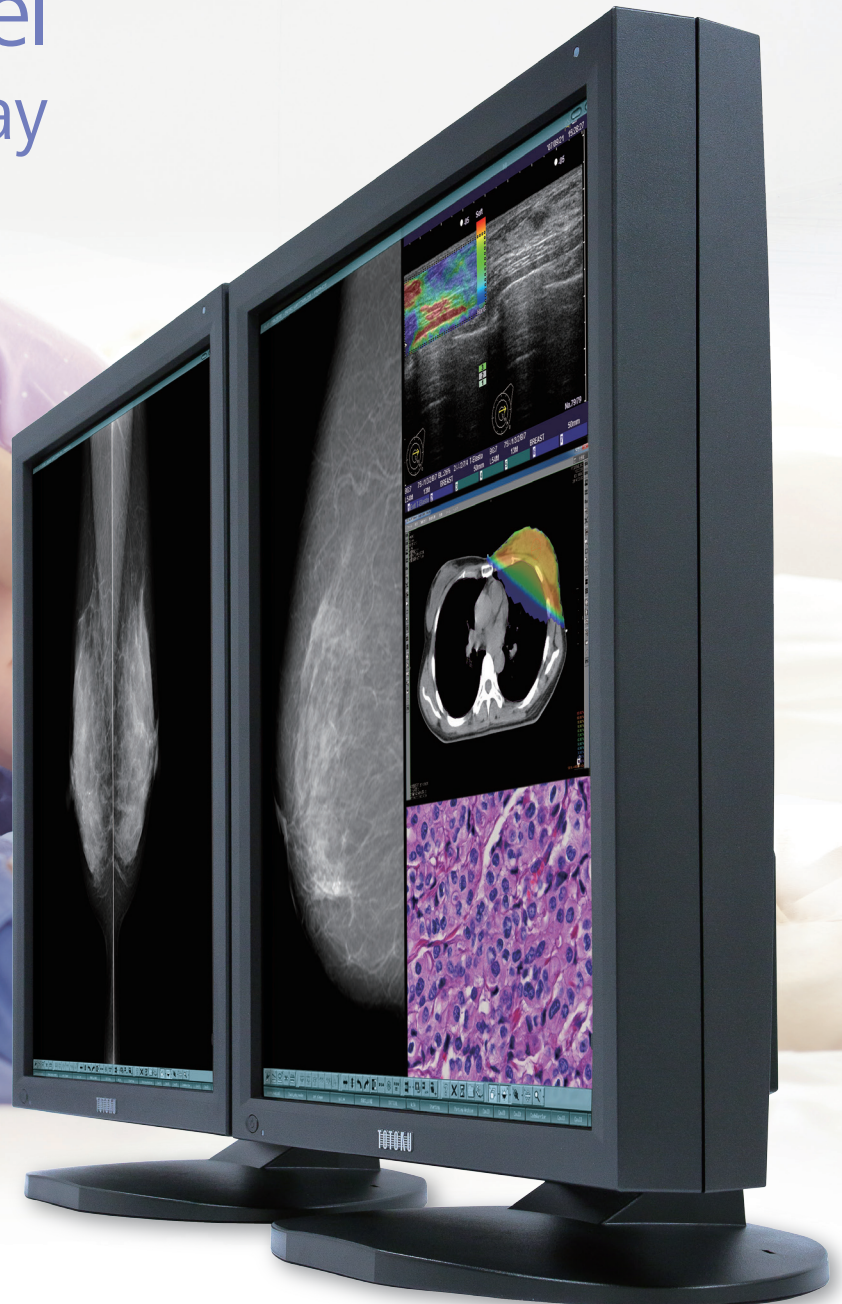
CCL 550*i2*

LED
Backlight

Ultrasound, CT, MRI and digital mammography on a single screen.
All-in-one solution for multi modality visualization.

5

Megapixel
Color Display



i model *i2*

21.3"

DisplayPort
&
DVI-D

1000
cd/m²

1300:1

Calibration
Function

16Bit
LUT

10-Bit
Display

OSD

Luminance
Uniformity
Correction

LED
Backlight

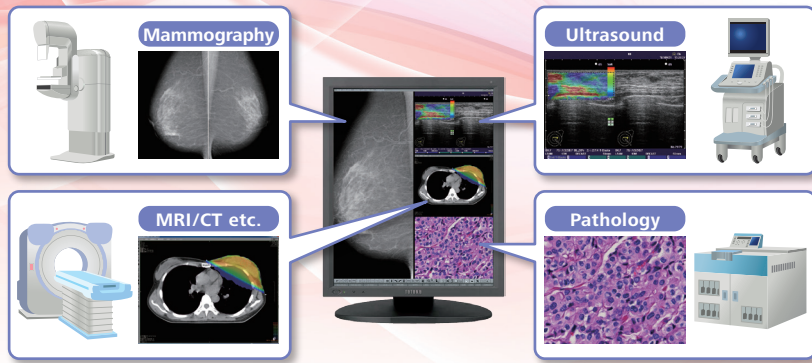
Dynamic
Gamma

Auto
Text
Mode

LED
Indicator

SMP color display for multi modality

CCL550i2 can accommodate images from any modality including ultrasound, CT, MRI, pathology and digital mammography.

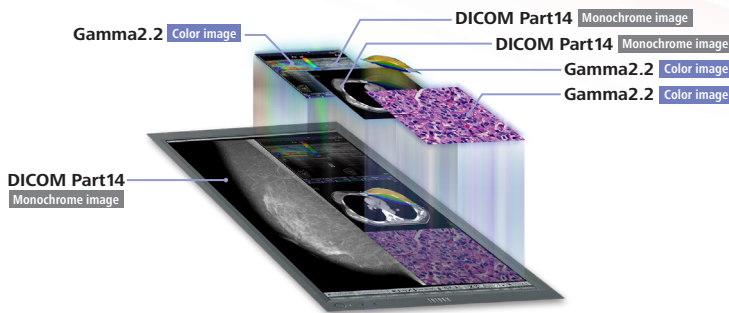


Specifications

| | | |
|--------------------------|---------------------------|---|
| Model Name | | CCL550i2 /AR, CCL550i2 /F |
| LCD Panel | Technology | 21.3-inch color TFT IPS technology |
| | Display Area | 338 mm x 422 mm |
| | Pixel Pitch | 0.165 mm x 0.165 mm |
| | Contrast Ratio | 1300:1 (typ) |
| | Maximum Luminance | 1000 cd/m ² (typ) 500 cd/m ² / 410 cd/m ² (calibrated) |
| Visual Performance | Viewing Angle | 176° vertical and horizontal |
| | Native Resolution | 2048x2560 |
| Interface | Display Colors | 16.77 million colors from a palette of 280 trillion colors 1.06 billion colors with DisplayPort and 10-bit viewer |
| | Input Signal | DVI-D (DVI 1.0 compliant) DisplayPort (DisplayPort 1.1a compliant) |
| Input Power Supply | Plug and Play | DDC2B compliant |
| | Input Power Supply | 100V - 240V 50/60Hz |
| Features | Maximum Power Consumption | 95W (typ) |
| | Calibration Control | Luminance, Gamma, Color temperature Storing 3 sets of LUT |
| Other Features | OSD Information Display | Model name, Serial No., Total operating time, Calibration settings (Operating time since last calibration, Luminance, Gamma), Current luminance and ambient light, DICOM conformance |
| | USB Hub | USB Rev.2.0 compliant, Self-powered, USB upstream connector (x1), USB downstream connector (x2) |
| | Other Features | Luminance / color uniformity correction, Hardware pivot, LED indicator, Multiple LUT, Self DICOM check |
| Approvals | | ANSI/AAMI ES60601-1(2005), CAN/CSA-C22.2 No. 60601-1(2008), FDA 510(k), FCC-B, ICES-003-B, CE, VCCI-B |
| Physical Characteristics | Dimensions (W x H x D) | Landscape : 475 mm x 483 / 544 mm x 220 mm Portrait : 390 mm x 525 / 587 mm x 220 mm |
| | Weight | 12 kg |
| | Tilt Stand | Tilt, Swivel, Portrait / Landscape |
| | Mount | VESA standard (100 mm x 100 mm) |
| | Security Slot | Anti-theft security slots (display and tilt stand) |
| Accessories | | Power cord, DVI cable, DisplayPort cable, USB cable, User manual, Cleaning kit* *AR coating model only |

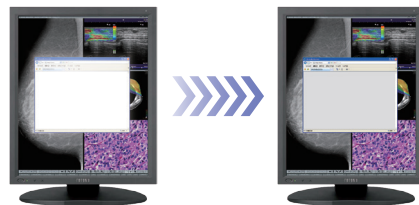
Dynamic Gamma

Color images are automatically recognized to provide optimized contrast, brightness and gamma. No user intervention is required.



Auto Text Mode

Automatic brightness control for text data to reduce eye strain for patient lists and reporting application.



LED Backlight

New LED backlight system provides more stability in images, energy saving and an extended period of lifetime.

Luminance Stabilizing System - λ-Sentinel

Front luminance sensor constantly monitors and accurately stabilizes luminance on the screen to optimize image quality.

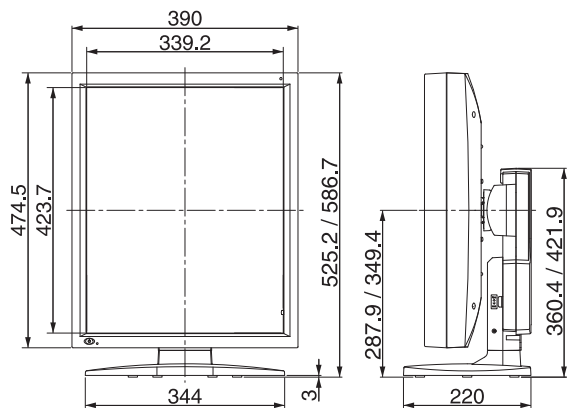
Uniformity Equalizer

Luminance and color uniformity correction system produces stable images across the screen.

DICOM Conformance Check

User friendly OSD functions include DICOM conformance check function.

Dimensions (mm)



•"TOTOKU" is a brand of medical and industrial displays manufactured and sold by JVCKENWOOD Corporation. •Company names and product names are the registered trademarks of the respective companies. •Product specifications and appearance are subject to change without notice. •Colors in photographs may differ from actual colors due to the printing process. •Images on screens are simulated.



| | |
|-------------------------------|---|
| Safety Precautions | <ul style="list-style-type: none"> •Please read the user's manual for safe and proper use. •Do not expose the product to dust, moisture, steam, or oily smoke. It could cause fire, electric shock, or a failure. |
|-------------------------------|---|

Please contact our distributor below with inquiries and orders.

Healthcare Systems Operation
 JVCKENWOOD Corporation
 3-12, Moriya-cho, Kanagawa-ku, Yokohama-shi, Kanagawa, 221-0022, Japan
 TEL: +81-45-450-1908 FAX: +81-45-450-1926
 E mail : medical-display.j@jvckenwood.com