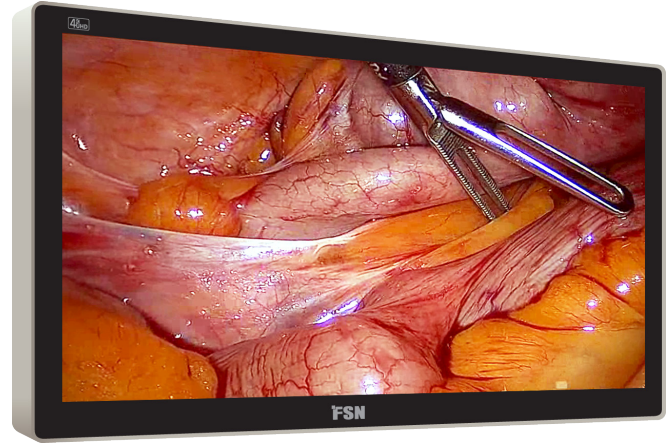


31" 4K HD Medical Display

4K UHD

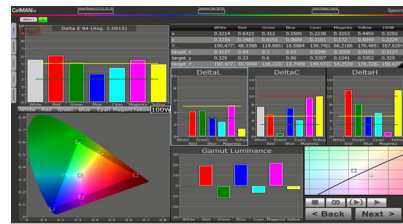
FSN Medical Technologies has solutions for managing your operating room video signals. Our products are engineered and built for compatibility with other highly specialized surgical and diagnostic equipment used in surgical suites, operating rooms, emergency rooms, and procedural facilities. FS-P3101D is our 31" 4K medical display, and is uniquely equipped to handle tasks in the demanding OR environment.

- 4K resolution (4096 x 2160 pixels).
- DVI and DisplayPort inputs.
- Rapid signal detection, robust mode tables.
- Built to last, rugged aluminum housing.
- Calibrated to clinical color.
- Image pan, zoom, freeze, picture-in-picture.

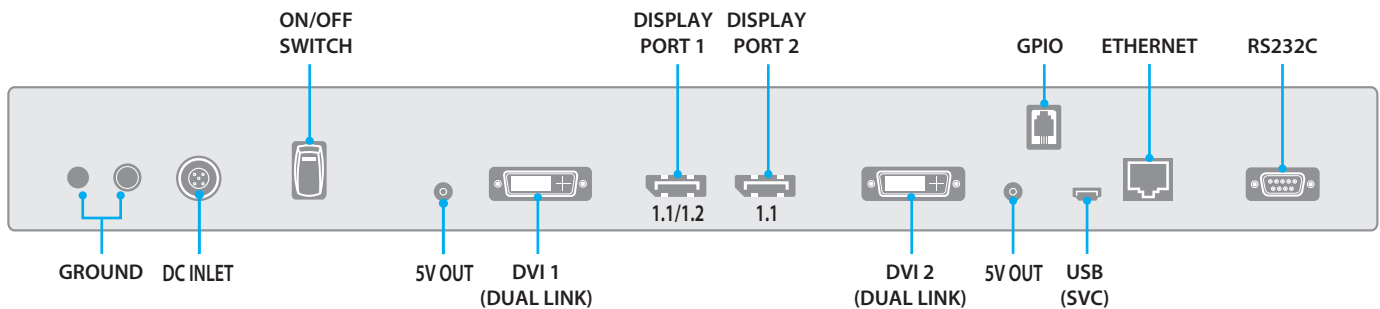


FSN's 31" 4K LED display features signal input options for DVI and DisplayPort, plus DC out power for smaller components. With a slim, sleek design and a flush-front glass bezel, FS-P3101D is ideal for showing crystal clear 4K images, and can be mounted to most OR boom arm systems.

Accurate Color Reproduction



FSN has implemented methods to fine-tune the properties of our displays. Distinct color space settings have been calibrated to well-known surgical color preferences.



FSN displays have the connections you need. Video and communication signals are connected to the monitor's back panel.

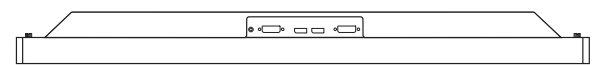
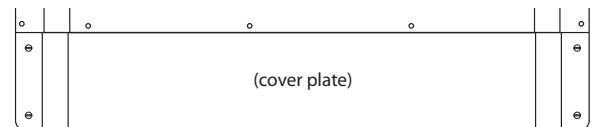
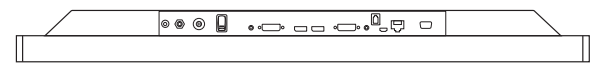
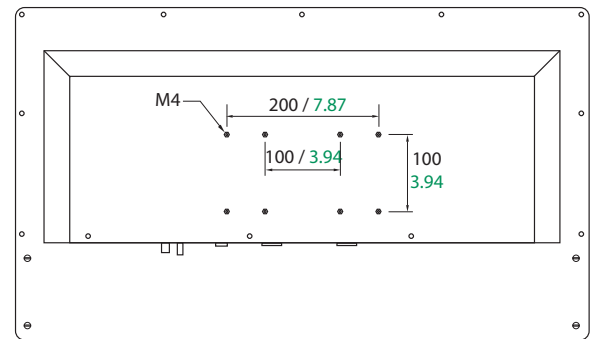
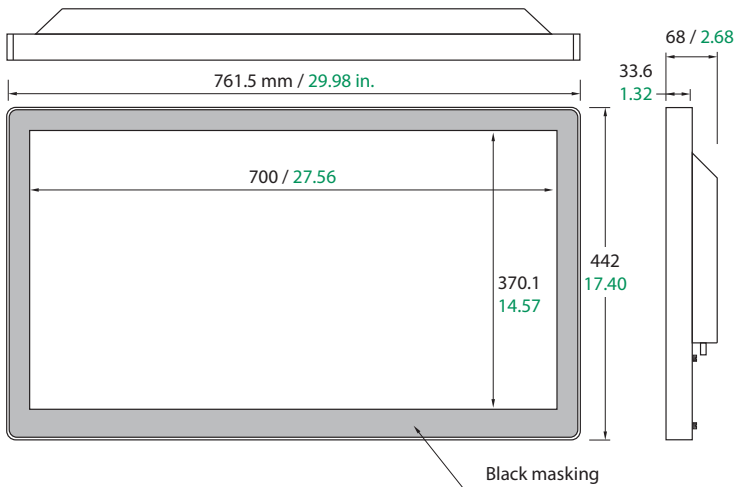
Specifications

General Features

Item	Description
Panel	31 inch TFT LCD (LED)
Resolution	4096 x 2160 pixel
Aspect Ratio	17 : 9
Active Area	697.96 X 368.06 mm
Input Signal	2 x DVI-D dual link 2 x DisplayPort (version 1.1, 1.2)
Power Supply	AC/DC Adaptor (AC 100-240V~, DC 24V 6.25A)
Control Key (touch)	Power, Menu, PIP, Up, Down, Plus, Minus, Input
Unit Dimension	761.5(W) x 442.0(H) x 68.0(D) mm 29.98(W) x 17.40(H) x 2.67(D) inch
Average Brightness	350 cd/m ²
Response Time (G-to-G)	20 ms
Viewing Angle (CR>10)	R/L 178, U/D 178
Weight	12.2 kg, 26.89 lbs.
Contrast Ratio	1500 : 1 typical
Pixel Pitch (mm)	0.1704 x 0.1704

Signal Timing

Input Signal	Type	Description
DVI	Type	Digital RGB
	Signal Format	TMDS single link
	Connector	DVI-D
DP	Type	Display Port
	Version	1.1, 1.2
	Connector	DisplayPort 20pin



Specifications are subject to change with or without notice. Doc. # FSN1969 Rev. 7/15