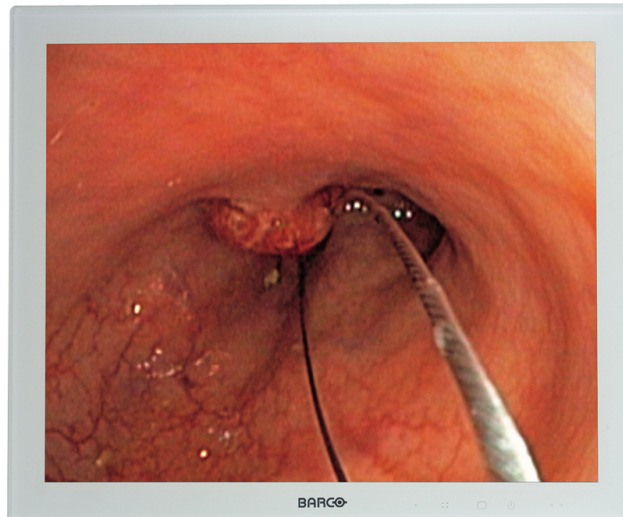
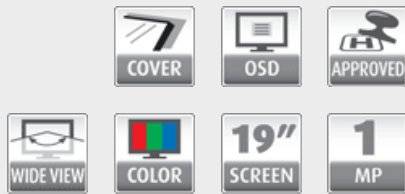


# MDSC-1119

## 19-inch surgical color LCD display



Barco's MDSC-1119 is a 19-inch, 1.3 MegaPixel color LCD display that provides surgical teams with artifact-free images and unequalled precision, while meeting the unique patient safety and space requirements of the integrated OR.

### Unsurpassed image quality

Incorporating the latest LCD technology, the MDSC-1119 features high brightness, making it ideal for the OR's high ambient light conditions. Furthermore, the MDSC-1119's high contrast ratio, color depth and wide viewing angle maximize image accuracy. Calibration of color, luminance and signal balance add to the optimal and unsurpassed image quality.

**BARCO**

Visibly yours

**Product specifications****MDSC-1119**

<b>Screen technology</b>	TFT AM LCD
<b>Active screen size (diagonal)</b>	483 mm (19.0")
<b>Active screen size (H x V)</b>	376 x 301 mm (14.8 x 11.9")
<b>Aspect ratio (H:V)</b>	5:4
<b>Resolution</b>	1MP (1280 x 1024)
<b>Pixel pitch</b>	0.2940 mm
<b>Color imaging</b>	Yes
<b>Color support</b>	16.7 million
<b>Viewing angle (H, V)</b>	178°
<b>Maximum luminance</b>	280 cd/m <sup>2</sup>
<b>Contrast ratio</b>	600:1
<b>Response time (Tr + Tf)</b>	14ms
<b>Scanning frequency (H; V)</b>	15-100 kHz, 50-120 Hz
<b>Housing color</b>	White
<b>Video input signals</b>	DVI-I Single Link VGA (D15) RGBS (4BNC) S-video Composite video Component video SDI/HD-SDI input/output (optional) DVI fiber optic input (optional)
<b>Interfaces/Ports</b>	4BNC Composite Video 4-pin Mini DIN D15 DVI-I 9pin D-sub No audio RS232
<b>Power requirements (nominal)</b>	100-250V
<b>Power consumption (nominal)</b>	80W
<b>Power save mode</b>	Yes
<b>Power management</b>	DVI-DMPM states supported Power On state Active-Off state DPMS states supported
<b>Dot clock</b>	165 MHz
<b>OSD languages</b>	English, French, German, Spanish
<b>Dimensions w/o stand (W x H x D)</b>	430 x 356 x 80 mm
<b>Dimensions packaged (W x H x D)</b>	535 x 590 x 185 mm
<b>Net weight w/o stand</b>	8.6 kg
<b>Net weight packaged w/o stand</b>	13.0 kg
<b>Mounting standard</b>	VESA (75 and 100 mm)
<b>Screen protection</b>	Protective, non-reflective PMMA cover
<b>Recommended modalities</b>	CT, MR, US, DR, CR, NM, Film
<b>Certifications</b>	UL 60601-1, CAN/CSA-C22.2 No 601.1-M90: 2005, IEC 60950-1, EN 60601-1, IEC 60601-1, CCC, CE, EN 60601-1-2, FCC-B, VCCI, RoHs compliant, IPX1
<b>Supplied accessories</b>	Getting Started Guide Video cables (DVI Dual Link, VGA, SVHS, BNC) Main cables (European (CEBEC/KEMA), USA (UL/CSA)) External power supply
<b>Optional accessories</b>	Barco MDSC Surgical Medical LCD Display Desk Stand Barco MDSC Surgical Medical LCD Display Vesa Extender Barco MDSC Surgical Medical LCD Display Extension Cable 10m Barco MDSC Surgical Medical LCD Display Extension Cable 2.5m

**Product specifications**

**MDSC-1119**

**Warranty**

3 years