

IMAGE PERFORMANCE

LCD Panel	Active Matrix TFT with IPS, LED Backlight
Image Size (H x W)	20.4 x 12.8 inches (518 x 324 mm)
Viewing Area (Diagonal)	24 inches (611 mm)
Pixel Pitch	0.270 mm
Resolution (H x W)	1920 x 1200 (WUXGA), 16:10 Aspect Ratio
Luminance	300 cd/m ² (Typical), 250 cd/m ² (BT.709)
Color Calibration	NDS Color Correction Technology (CCT)
Contrast Ratio	1000:1 (Typical)
Color Gamut	BT.709 or SMPTE C
Viewing Angle	178° (Horizontal & Vertical)
Response Time	14 ms (Typical)

GENERAL

Input Power Requirements	24 Volts DC (22.5 Volts minimum)
Power Consumption	50 Watts (Typical)
Dimensions (W x H x D)	23.5 x 15.8 x 4 inches (597 x 401 x 100 mm)
Weight	15.7 lbs (7.1Kg)
Temperature	Operating: 0 to +40°C (+32 to +104°F) Storage: -20 to +60°C (-4 to +140°F)
Humidity	Operating: 20 – 85% RH Storage: 5 – 85% RH
Mounting	100 mm VESA

STANDARD DISPLAY PART NUMBERS

90R0063 - 24" G2 w/o Fiber, **90R0064** - 24" G2 w/ Single Fiber
90R0065 - 24" G2 w/o Fiber w/ Touch, **90R0066** - 24" G2 w/ Single Fiber w/ Touch

SUPPLIED / OPTIONAL ACCESSORIES

Supplied: Power Supply & AC Cord, Video Cables - S-Video, BNC, VGA, DVI, Product Documentation CD, Printed User Manual
Models With Touch Screen Also Include a Serial Cable & Touch Drivers CD
Optional: Display Stand (26B0078), Rear I/O Cover (90Z0115)

COMPLIANCE & CERTIFICATIONS

UL 60601-1; EN 60601-1; EN 60601-1-2; MDD 93/42/EEC & 2007/47/EC; CE; CAN/CSA C22.2 NO. 601.1; Class I Medical Device; FCC Part 15; RoHS; WEEE

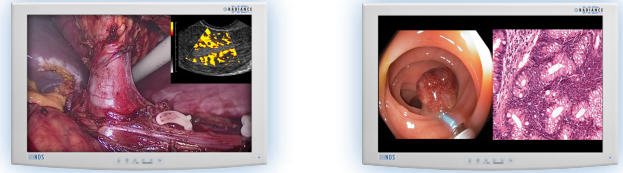
USER CONTROLS - ON-SCREEN MENU

Quick Input Select, Primary / Secondary Input Select, MMI Window Size / Swap, CCT Setting, Brightness, Contrast, Hue, Saturation, Gamma, Sharpness, RGB Gain, Backlight Level, Horizontal & Vertical Position, Phase, Frequency, DPMS, Auto-Source Select, Scaling, Overscan, Five Programmable User / Modality Settings Profiles

VIDEO INPUT FORMATS

Format	Input (Digital)	Input (Analog)	Horizontal Freq (kHz)
576/50i (PAL)	SDI, DVI / Fiber	Comp. S-Video, RGBS, YP _b P _r	15.625
480/60i (NTSC)	SDI, DVI / Fiber	Comp. S-Video, RGBS, YP _b P _r	15.734
576/50p	DVI / Fiber	SOG, RGBS, YP _b P _r	31.250
480/60p	DVI / Fiber	SOG, RGBS, YP _b P _r	31.469
720/50p	HD-SDI, DVI / Fiber	HD-RGBS, HD-YP _b P _r	37.500
720/60p	HD-SDI, DVI / Fiber	HD-RGBS, HD-YP _b P _r	45.000
1080/50i	HD-SDI, DVI / Fiber	HD-RGBS, HD-YP _b P _r	28.125
1080/60i	HD-SDI, DVI / Fiber	HD-RGBS, HD-YP _b P _r	33.750
1080/50p	3G-SDI, DVI / Fiber	--	56.2
1080/60p	3G-SDI, DVI / Fiber	--	67.3

LED BACKLIGHT, COLOR CALIBRATED SURGICAL DISPLAY



INPUTS

DVI (1)
Single Fiber
DVI (2)
3G-SDI (1)
3G-SDI (2)
VGA

CONNECTIVITY

DVI-D
LC x 1 (Optional)
DVI-I (2)
BNC, 75 Ω
BNC, 75 Ω
HD-15, or BNC x 5, or DVI-I (2), 0.7 Vp-p ± 6db, 75 Ω
BNC, 75 Ω
BNC, 75 Ω
BNC x 5, or DVI-I (2), 0.7 Vp-p ± 6db, 75 Ω
BNC x 5, or DVI-I (2), 0.7 Vp-p ± 6db, 75 Ω
DIN-4, or BNC x 2, 0.7 Vp-p +6/-3db, 75 Ω
BNC, 0.7 Vp-p +6/-3db, 75 Ω

OUTPUTS

DVI (1)
3G-SDI (1)
HD-RGBS, RGBS
HD-YP_bP_r / YP_bP_r
S-Video

DVI-D
BNC
BNC x 5, or DVI-I (2)
BNC x 5, or DVI-I (2)
DIN-4

CONTROL INPUTS

Serial Remote/Touch
GPIO
ND-OS

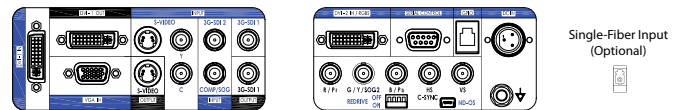
D-sub 9-pin, RS-232C
RJH-4, TTL
Mini-USB

TOUCH SCREEN (OPTIONAL)

Touch Screen Type
Communication Interface

5-Wire, Resistive Type
Serial, D-sub 9-pin

INPUT / OUTPUT CONNECTOR PANEL



Single-Fiber Input (Optional)

MULTI-MODALITY INPUT COMBINATIONS (FULL MMI)

PRIMARY INPUT	SECONDARY INPUT									
	DVI1/Fiber	3G-SDI 1	DVI2	3G-SDI 2	YP _b P _r /SOG2	RGBS	Y/C	Comp.	SOG1	VGA
DVI 1/ Fiber	•	•	•	•	•	•	•	•	•	•
3G-SDI 1	•	•	•	•	•	•	•	•	•	•
DVI 2	•	•	•	•	N/A	N/A	•	•	•	•
3G-SDI 2	•	•	•	•	•	•	•	•	•	•
RGBS	•	•	N/A	•	•	•	•	•	•	•
YP _b P _r /SOG 2	•	•	N/A	•	•	•	•	•	•	•
Y/C	•	•	•	•	•	•	•	N/A	•	•
Comp.	•	•	•	•	•	•	N/A	•	•	•
SOG 1	•	•	•	•	•	•	•	•	•	N/A
VGA	•	•	•	•	•	•	•	•	N/A	•