

## IMAGE PERFORMANCE

LCD Panel	Active Matrix With IPS. LED Backlight
Image Size (W x H)	14.8 x 11.9 inches (376 x 301 mm)
Viewing Area (Diagonal)	19 inches (483 mm)
Pixel Pitch	0.294 mm
Resolution (H x V)	1280 x 1024 (SXGA), 5:4 Aspect Ratio
Luminance	330 cd/m <sup>2</sup> (Typical)
Color Calibration	NDS Color Correction Technology (CCT)
Contrast Ratio	900:1
Number of Colors	16.8 Million
Color Gamut	BT.709 or SMPTE-C
Viewing Angle	178° (Horizontal & Vertical)
Response Time	7 ms (Typical)
Display Latency	Less than 1 Frame (up to 16 ms)

## GENERAL

Input Power Requirements	24 Volts DC (Minimum 12.0 Volts)
Power Consumption	40 Watts (typical)
Dimensions (W x H x D)	18 x 16 x 4 inches (465 x 400 x 98 mm)
Weight	10 lbs (4.5 Kg)
Temperature	Operating: 0 to +40°C (+32 to +104°F) Storage: -20 to +50°C (-4 to +122°F)
Humidity	Operating: 20 – 85% RH Storage: 5 – 85% RH
Mounting	100 mm VESA

## STANDARD DISPLAY PART NUMBER

90R0056 - 19" Radiance G2

## SUPPLIED / OPTIONAL ACCESSORIES

**Supplied:** Power Supply, AC Cord, Video Cables - S-Video, BNC, VGA

Product Documentation CD, Printed User Manual

**Optional:** Display Stand (26B0078), 30 ft. Power Extension Cable kit (90I0017)

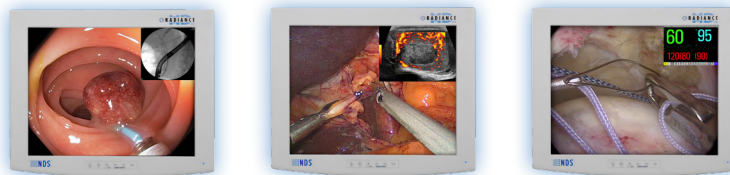
## USER CONTROLS - ON-SCREEN MENU

Quick Input Select, Primary / Secondary Input Select, MMI Window Size / Swap, CCT Setting, Brightness, Contrast, Hue, Saturation, Color Temp. Presets, Gamma Presets, "PACS" Gamma Setting, Sharpness, RGB Gain, Backlight Level, Horizontal & Vertical Position, Phase, Frequency, DPMS, Auto-Source Select, Scaling, Overscan, Five Programmable User / Modality Settings Profiles

## INPUT FORMATS

Format	Input (Digital)	Input (Analog)	Horizontal Frequency (kHz)
576/50i (PAL)	SDI, DVI	Comp, S-Video, RGBS, YP <sub>b</sub> P <sub>r</sub>	15.625
480/60i (NTSC)	SDI, DVI	Comp, S-Video, RGBS, YP <sub>b</sub> P <sub>r</sub>	15.734
576/50p	DVI	SOG, RGBS, YP <sub>b</sub> P <sub>r</sub>	31.250
480/60p	DVI	SOG, RGBS, YP <sub>b</sub> P <sub>r</sub>	31.469
720/50p	HD-SDI, DVI	HD-RGBS, HD-YP <sub>b</sub> P <sub>r</sub>	37.500
720/60p	HD-SDI, DVI	HD-RGBS, HD-YP <sub>b</sub> P <sub>r</sub>	45.000
1080/50i	HD-SDI, DVI	HD-RGBS, HD-YP <sub>b</sub> P <sub>r</sub>	28.125
1080/60i	HD-SDI, DVI	HD-RGBS, HD-YP <sub>b</sub> P <sub>r</sub>	33.750
1080/50p	DVI	HD-RGBS, HD-YP <sub>b</sub> P <sub>r</sub>	56.2
1080/60p	DVI	HD-RGBS, HD-YP <sub>b</sub> P <sub>r</sub>	67.3

## LED BACKLIGHT COLOR CALIBRATED SURGICAL DISPLAY



## INPUTS

DVI (1)	DVI-D
DVI (2)	DVI-I (2)
3G-SDI (1)	BNC, 75 Ω
3G-SDI (2)	BNC, 75 Ω
VGA	HD-15, or BNC x 5, or DVI-I (2), 0.7 Vp-p ± 6db, 75 Ω
SOG (1)	BNC, 75 Ω
SOG (2)	BNC, 75 Ω
HD-RGBS, RGBS	BNC x 5, or DVI-I (2), 0.7 Vp-p ± 6db, 75 Ω
HD-YP <sub>b</sub> P <sub>r</sub> , YP <sub>b</sub> P <sub>r</sub>	BNC x 5, or DVI-I (2), 0.7 Vp-p ± 6db, 75 Ω
S-Video	DIN-4, or BNC x 2, 0.7 Vp-p +6/-3db, 75 Ω
Composite	BNC, 0.7 Vp-p +6/-3db, 75 Ω

## CONNECTIVITY

## OUTPUTS

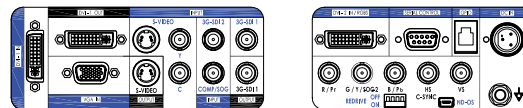
DVI (1)	DVI-D
3G-SDI (1)	BNC
HD-RGBS, RGBS	BNC x 5, or DVI-I (2)
HD-YP <sub>b</sub> P <sub>r</sub> / YP <sub>b</sub> P <sub>r</sub>	BNC x 5, or DVI-I (2)
S-Video	DIN-4

## CONTROL INPUTS

Serial Remote	D-sub 9-pin, RS-232C
GPIO	RJH-4, TTL
ND-OS	Mini-USB

**COMPLIANCE & CERTIFICATIONS** ANSI/AAMI ES60601-1, CAN/CSA C22.2 No. 60601-1, FCC Class B, EN60601-1, EN60601-1-2, CE, MDD 93/42/EEC, 2007/47/EC, RoHS, WEEE, Class I Medical Device, CCC (Pending).

## INPUT / OUTPUT CONNECTOR PANEL



## MULTI-MODALITY INPUT COMBINATIONS (FULL MMI)

PRIMARY INPUT	SECONDARY INPUT									
	DVI1	3G-SDI 1	DVI2	3G-SDI 2	YP <sub>b</sub> P <sub>r</sub> /SOG2	RGBS	Y/C	Comp.	SOG1	VGA
DVI 1		•	•	•	•	•	•	•	•	•
3G-SDI 1	•		•	•	•	•	•	•	•	•
DVI 2	•	•		•	N/A	N/A	•	•	•	•
3G-SDI 2	•	•	•		•	•	•	•	•	•
RGBS	•	•	N/A	•			•	•	•	•
YP <sub>b</sub> P <sub>r</sub> /SOG 2	•	•	N/A	•			•	•	•	•
Y/C	•	•	•	•	•			N/A	•	•
Comp.	•	•	•	•	•	•	N/A			•
SOG 1	•	•	•	•	•	•	•			N/A
VGA	•	•	•	•	•	•	•	•	N/A	