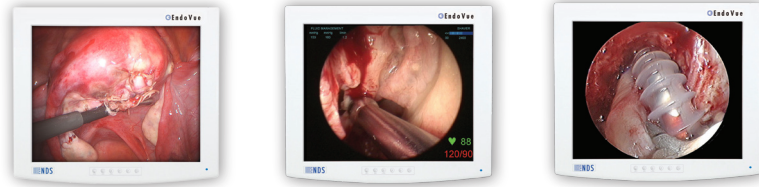


### SUPPORTED DEVICES/APPLICATIONS

SOURCE	APPLICATION
DVI, HD-SDI	HD Endoscopy, PACS, Vital Signs, Room Camera
HD-RGBS, HD-YP <sub>b</sub> P <sub>r</sub>	HD Endoscopy
RGBS, YP <sub>b</sub> P <sub>r</sub> , SDI	SD Endoscopy
S-Video, Composite	Fluoroscopy, SD Endoscopy, Ultrasound
VGA	PACS, Endoscopy, Ultrasound, Angiography

### HIGH DEFINITION SURGICAL VISUALIZATION



### IMAGE PERFORMANCE

LCD Panel	Active Matrix With In Plane Switching (IPS)
Picture Size (H x W)	14.8 x 11.9 inches (376 x 301 mm)
Viewing Area (Diagonal)	19 inches (483 mm)
Pixel Pitch	0.294 mm
Resolution (H x W)	1280 x 1024 (SXGA)
Luminance	350 cd/m <sup>2</sup>
Contrast Ratio	650:1
Aspect Ratio	5:4
Number of Colors	16.8 Million
Color Gamut	100% (SMPTE 296M, HD Standard)
Viewing Angle	178°
Response Time	10-15 ms
Gamma	1.8, 2.0, 2.2, 2.4, 2.6, VIDEO, PACS (DICOM)

### INPUTS

DVI	DVI-D
HD-SDI	BNC, 75 Ω
HD-RGBS, RGBS	DVI-I or HD-15, 0.7 Vp-p ± 6db, 75 Ω
HD-YP <sub>b</sub> P <sub>r</sub> / YP <sub>b</sub> P <sub>r</sub>	DVI-I or HD-15, 0.7 Vp-p ± 6db, 75 Ω
VGA	HD-15, 0.7 Vp-p ± 6db, 75 Ω
S-Video	DIN-4, 0.7 Vp-p +6/-3db, 75 Ω
Composite	BNC, 0.7 Vp-p +6/-3db, 75 Ω

### CONNECTIVITY

### OUTPUTS

DC Output	+5 VDC used for driving video fiber receiver
-----------	--

### CONTROL INPUT

Serial Remote	D-sub 9pin, RS-232C
---------------	---------------------

### GENERAL

Input Power Requirements	22 – 24 Volts DC
Power Consumption	60W (typical)
Dimensions (W x H x D)	18.3 x 15.6 x 3.9 inches (464.8 x 396.2 x 99 mm)
Weight	15 lbs (6.8 Kg)
Temperature	Operating: 0 to +40°C (+32 to +104°F) Storage: -20 to +60°C (-4 to +140°F)
Humidity	Operating: 20 – 85% RH Storage: 10 – 90% RH
Mounting	100 mm VESA

### USER CONTROLS - ON-SCREEN MENU

Input Selection, Brightness, Contrast, Hue, Saturation, Gamma, Sharpness, RGB Gain, Backlight Level, Horizontal & Vertical Position, Phase, Frequency, DPMS, Auto-Source Select, Scaling, Overscan, Programmable User / Modality Settings Profiles

### SUPPLIED / OPTIONAL ACCESSORIES

Supplied: Power Supply, Video Cables - S-Video, BNC, VGA, DVI, AC Cord, Product Documentation CD, Printed User Manual  
Optional: Desktop Stand (P/N 26B0078)

### COMPLIANCE & CERTIFICATIONS

UL 60601-1, EN 60601-1, EN 60601-1-2, FCC Part 15, MDD 93/42/EEC, CE, 2007/47/EC, CAN/CSA C22.2 NO. 601.1, Class 1 Medical Device, RoHS, WEEE

### VIDEO INPUT FORMATS

Format	Input (Digital)	Input (Analog)	Horizontal Frequency (kHz)
576/50i (PAL)	SDI	Comp, S-Video, RGBS, YP <sub>b</sub> P <sub>r</sub>	15.625
480/60i (NTSC)	SDI	Comp, S-Video, RGBS, YP <sub>b</sub> P <sub>r</sub>	15.734
576/50p	DVI	RGBS, YP <sub>b</sub> P <sub>r</sub>	31.250
480/60p	DVI	RGBS, YP <sub>b</sub> P <sub>r</sub>	31.469
720/50p	HD-SDI, DVI	HD-RGBS, HD-YP <sub>b</sub> P <sub>r</sub>	37.500
720/60p	HD-SDI, DVI	HD-RGBS, HD-YP <sub>b</sub> P <sub>r</sub>	45.000
1080/50i	HD-SDI, DVI	HD-RGBS, HD-YP <sub>b</sub> P <sub>r</sub>	28.125
1080/60i	HD-SDI, DVI	HD-RGBS, HD-YP <sub>b</sub> P <sub>r</sub>	33.750
1080/50p	DVI	--	56.2
1080/60p	DVI	--	67.3

### INPUT / OUTPUT CONNECTOR PANEL

