

## IMAGE PERFORMANCE

LCD Panel	Active Matrix TFT w/ IPS, LED Backlight, 120 Hz
Image Size (W x H)	36.6 x 20.6 inches (930 x 523 mm)
Viewing Area (Diagonal)	42 inches (1067 mm)
Pixel Pitch	0.485 mm
Resolution (H x V)	1920 x 1080 (16:9 Aspect Ratio, Full HD)
Luminance	450 cd/m <sup>2</sup> (Typical), 350 cd/m <sup>2</sup> (BT.709)
Color Calibration	NDS Color Correction Technology (CCT)
Contrast Ratio	1300:1 (Typical)
Number of Colors	1.08 Billion Colors (10-Bit)
Color Gamut	BT.709 or SMPTE-C
Viewing Angle	178° (Horizontal & Vertical)
Response Time	12 ms (Typical)

## GENERAL

Input Power Requirements	100 to 240 VAC ± 10%, 50/60 Hz
Power Consumption	149 Watts (Max)
Dimensions	39.4 x 23.4 x 3.8 inches (1001 x 593 x 96 mm)
Weight	47.0 lbs (19.4 Kg)
Temperature	Operating: 0 to +40°C (+32 to +104°F) Storage: -20 to +50°C (-4 to +122°F)
Humidity	Operating: 20 – 85% RH Storage: 10 – 90 % RH
Mounting	300 mm x 100 mm VESA

## STANDARD DISPLAY PART NUMBER

90R0070 - 42" Radiance G2 with Single Fiber

## SUPPLIED ACCESSORIES

Video Cables - S-Video, BNC, VGA, DVI, AC Cord,  
Product Documentation CD, Printed User Manual

**COMPLIANCE & CERTIFICATIONS:** UL60601-1, ANSI/AAMI ES60601-1, CAN/CSA C22.2 No. 60601-1, FCC Part 15, EN60601-1, EN60601-1-2, CE, MDD 93/42/EEC, 2007/47/EC, RoHS, WEEE, Class I Medical Device

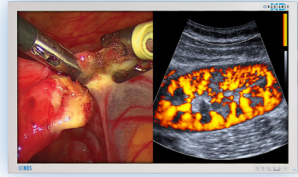
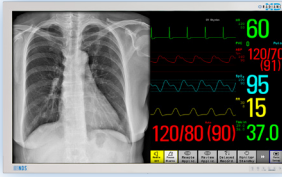
## USER CONTROLS - ON-SCREEN MENU

Quick Input Select, Primary / Secondary Input Select, MMI Window Size / Swap, CCT Setting, Brightness, Contrast, Hue, Saturation, Gamma, Sharpness, RGB Gain, Backlight Level, Horizontal & Vertical Position, Phase, Frequency, DPMS, Auto-Source Select, Scaling, Overscan, Five Programmable User / Modality Settings Profiles

## VIDEO INPUT FORMATS

Format	Input (Digital)	Input (Analog)	Horizontal Freq (kHz)
576/50i (PAL)	SDI, DVI / Fiber	Comp. S-Video, RGBS, YP <sub>b</sub> P <sub>r</sub>	15.625
480/60i (NTSC)	SDI, DVI / Fiber	Comp. S-Video, RGBS, YP <sub>b</sub> P <sub>r</sub>	15.734
576/50p	DVI / Fiber	SOG, RGBS, YP <sub>b</sub> P <sub>r</sub>	31.250
480/60p	DVI / Fiber	SOG, RGBS, YP <sub>b</sub> P <sub>r</sub>	31.469
720/50p	HD-SDI, DVI / Fiber	HD-RGBS, HD-YP <sub>b</sub> P <sub>r</sub>	37.500
720/60p	HD-SDI, DVI / Fiber	HD-RGBS, HD-YP <sub>b</sub> P <sub>r</sub>	45.000
1080/50i	HD-SDI, DVI / Fiber	HD-RGBS, HD-YP <sub>b</sub> P <sub>r</sub>	28.125
1080/60i	HD-SDI, DVI / Fiber	HD-RGBS, HD-YP <sub>b</sub> P <sub>r</sub>	33.750
1080/50p	3G-SDI, DVI / Fiber	--	56.2
1080/60p	3G-SDI, DVI / Fiber	--	67.3

## LED BACKLIGHT, 120 Hz, COLOR CALIBRATED SURGICAL DISPLAY



## INPUTS

DVI (1)	DVI-D
Single Fiber	LC x 1
DVI (2)	DVI-I (2)
3G-SDI (1)	BNC, 75 Ω
3G-SDI (2)	BNC, 75 Ω
VGA	HD-15, or BNC x 5, or DVI-I (2), 0.7 Vp-p ± 6db, 75 Ω
SOG (1)	BNC, 75 Ω
SOG (2)	BNC, 75 Ω
HD-RGBS, RGBS	BNC x 5, or DVI-I (2), 0.7 Vp-p ± 6db, 75 Ω
HD-YP <sub>b</sub> P <sub>r</sub> , YP <sub>b</sub> P <sub>r</sub>	BNC x 5, or DVI-I (2), 0.7 Vp-p ± 6db, 75 Ω
S-Video	DIN-4, or BNC x 2, 0.7 Vp-p +6/-3db, 75 Ω
Composite	BNC, 0.7 Vp-p +6/-3db, 75 Ω

## CONNECTIVITY

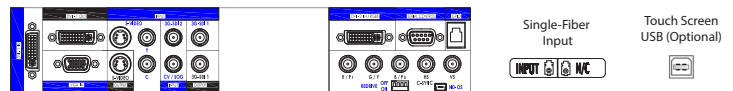
## OUTPUTS

DVI (1)	DVI-D
3G-SDI (1)	BNC
HD-RGBS, RGBS	BNC x 5, or DVI-I (2)
HD-YP <sub>b</sub> P <sub>r</sub> / YP <sub>b</sub> P <sub>r</sub>	BNC x 5, or DVI-I (2)
S-Video	DIN-4

## CONTROL INPUTS

Serial Remote	D-sub 9-pin, RS-232C
GPIO	RJH-4, TTL
ND-OS	Mini-USB

## INPUT / OUTPUT CONNECTOR PANEL



## MULTI-MODALITY INPUT COMBINATIONS (FULL MMI)

PRIMARY INPUT	SECONDARY INPUT									
	DVI1/Fiber	3G-SDI 1	DVI2	3G-SDI 2	YP <sub>b</sub> P <sub>r</sub> /SOG2	RGBS	Y/C	Comp.	SOG1	VGA
DVI 1/ Fiber	•	•	•	•	•	•	•	•	•	•
3G-SDI 1	•	•	•	•	•	•	•	•	•	•
DVI 2	•	•	•	•	N/A	N/A	•	•	•	•
3G-SDI 2	•	•	•	•	•	•	•	•	•	•
RGBS	•	•	N/A	•	•	•	•	•	•	•
YP <sub>b</sub> P <sub>r</sub> /SOG 2	•	•	N/A	•	•	•	•	•	•	•
Y/C	•	•	•	•	•	•	N/A	•	•	•
Comp.	•	•	•	•	•	•	N/A	•	•	•
SOG 1	•	•	•	•	•	•	•	•	N/A	•
VGA	•	•	•	•	•	•	•	•	N/A	•