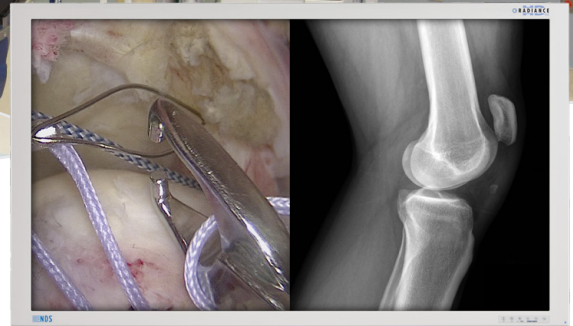


55" RADIANCE® G2

Industry-Leading High-End Surgical Display



The new 55" Radiance® G2 display utilizes the latest LED backlight and 120 Hz refresh rate technology. It also features NDSsi's proprietary Color Correction Technology (CCT), which enables the display to conform to the BT.709 HDTV color standard. The precise color calibration achieved using CCT ensures consistent color response across the entire family of Radiance® G2 displays. Surgeons can now have the clinical confidence that the endoscopic image they view in different rooms and on different size displays are exactly the same. The 55" Radiance® G2 comes standard with two 3G-SDI inputs and an embedded single-fiber input. Plus it is compliant with both the 3rd Edition medical safety standard and RoHS requirements, making it a future-proof investment.

- The Latest High-End 55" Surgical Display
- Industry Leading LED Backlight and 120 Hz Technology
- Color Correction Technology (CCT)
- Comes Standard with Dual 3G-SDI and Single-Fiber Inputs
- 3rd Edition & RoHS Compliance

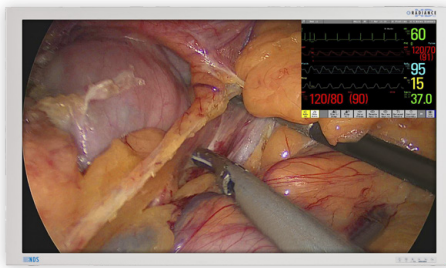
First in Imaging

55" RADIANCE® G2

Industry-Leading High-End Surgical Display



Endoscopy & Vital Signs



Endoscopy & Ultrasound

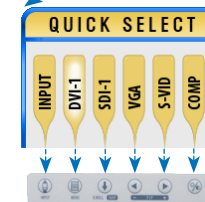


Fluoroscopy & PACS Imaging



PERFORMANCE / FEATURES

LCD Panel	Active Matrix TFT with In-Plane-Switching, LED Backlight 120 Hz
Output Luminance (Max)	450 cd/m ²
Output Luminance (Calibrated)	350 cd/m ² (BT.709)
Resolution (H x V)	1920 x 1080 (Full HD)
Single-Fiber Input (LC x 1)	Standard Feature
3G-SDI Capability	Comes Standard with Two 3G-SDI Inputs
Full Multi-Modality Support	Yes
Gamma	1.8, 2.0, 2.2, 2.4, 2.6, Color-Corrected Video Gamma, and PACS
"Quick Select" Feature	New Interface for Quickly Switching Inputs



New "Quick Select" Softkeys

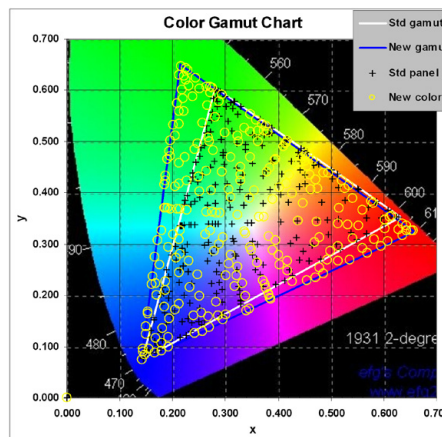
REGULATORY COMPLIANCE

ANSI/AAMI ES60601-1, CAN/CSA C22.2 No. 60601-1, FCC Part 15, EN60601-1, EN60601-1-2, CE, MDD 93/42/EEC, 2007/47/EC, RoHS, WEEE, Class I Medical Device

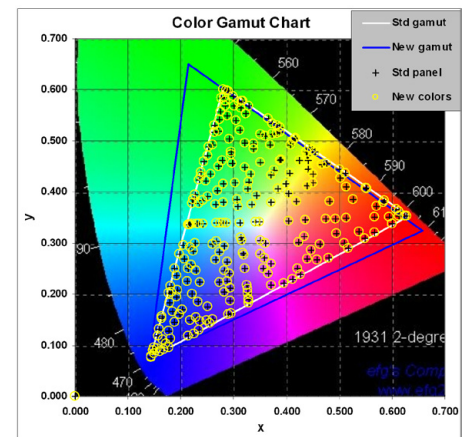
COLOR CORRECTION TECHNOLOGY (CCT)

NDSsi's Color Correction Technology (CCT) is a proprietary dynamic color calibration solution. Pixel-by-pixel color response correction is performed in real-time, resulting in a display that conforms to the BT.709 HDTV color standard. The clinical benefit for surgeons is superior color consistency across all displays, no matter which operating room they are installed in, or which cart they are on.

Without Color Correction Technology



With NDSsi Color Correction Technology



Corporate Headquarters
5750 Hellyer Avenue
San Jose, CA 95138 (USA)
Tel: 408 776 0085
Toll Free: 866 637 5237
Email: info@ndssi.com

Europe
Nijverheidscentrum 28
2761 JP Zevenhuizen (ZH)
The Netherlands
Tel: + 31 180 63 43 56
Email: info-EMEA@ndssi.com

Asia Pacific
Sea Fort Square/Center Building, 8F
2-3-12 Higashi-Shinagawa,
Shinagawa-ku Tokyo, Japan 140-0002
Tel: + 81 3 5781 8292
Email: info@ndssi.jp