

26" RADIANCE® G2 HB

Industry-Leading Brightness & LED Technology



The second-generation NDSsi 26" Radiance® G2 HB display is the highest-end visualization system available in the industry. With the brightest luminance output of any 26" surgical display, it is the first of its kind to incorporate backlight stabilization as well as Color Correction Technology (CCT) to conform to the BT.709 standard. This combination delivers a level of optical consistency far beyond what has been previously available. The 26" Radiance® G2 HB supports 3G-SDI and optional single-fiber input, making it suitable for the most advanced digital OR installations.

- Brightest 26" Surgical Display Available
- Exclusive Stabilized High-Bright LED Backlight
- Color Correction Technology (CCT)
- Dual 3G-SDI and Optional Single-Fiber Inputs
- True 16:9 HDTV Aspect Ratio

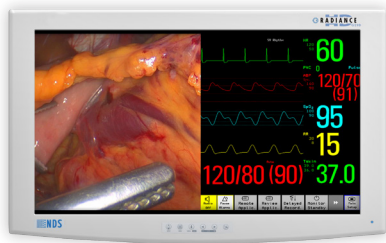
First in Imaging

26" RADIANCE® G2 HB

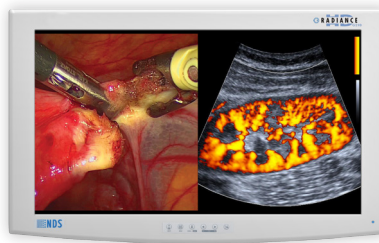
Industry-Leading Brightness & LED Technology



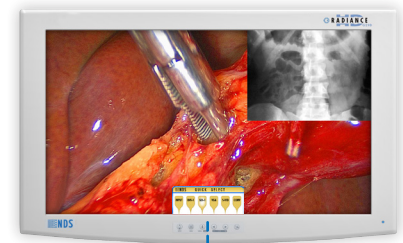
Endoscopy & Vital Signs



Endoscopy & Ultrasound

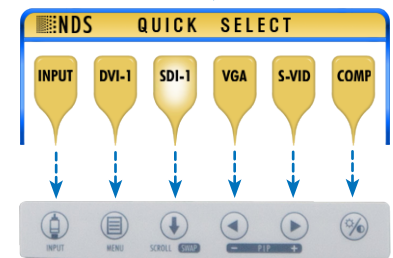


Endoscopy & PACS Imaging



PRODUCT FEATURES

LCD Panel	Active Matrix TFT with IPS, "High-Bright" LED Backlight
Output Luminance (Max)	800 cd/m ²
Output Luminance (Stabilized)	500 cd/m ² (BT.709)
Luminance Stability System	NDS Intelli-guard™ Backlight Control System
Resolution (H x W)	1920 x 1080 (Full HD)
Single-Fiber Input (LC x 1)	Optional Feature
3G-SDI Capability	Comes Standard With Two 3G-SDI Inputs
Full Multi-Modality Support	Yes
Gamma Settings	1.8, 2.0, 2.2, 2.4, 2.6, Color-Corrected Video Gamma & PACS
DICOM Luminance Response	Meets the DICOM 3.14 Standard When "Gamma" is Set to "PACS"
"Quick Select" Feature	New Interface For Quickly Switching Inputs



New "Quick Select" Softkeys

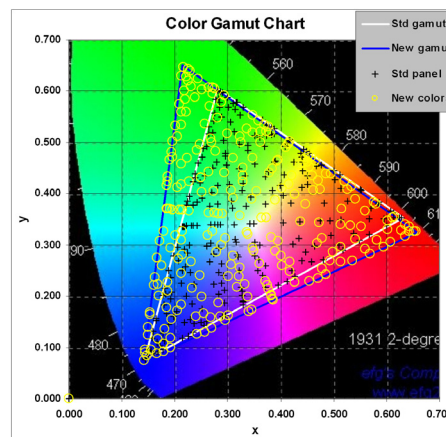
COMPLIANCE & CERTIFICATIONS

UL 60601-1; EN 60601-1; EN 60601-1-2; MDD 93/42/EEC & 2007/47/EC; CE; CAN/CSA C22.2 NO. 601.1; Class I Medical Device; FCC Part 15; RoHS; WEEE

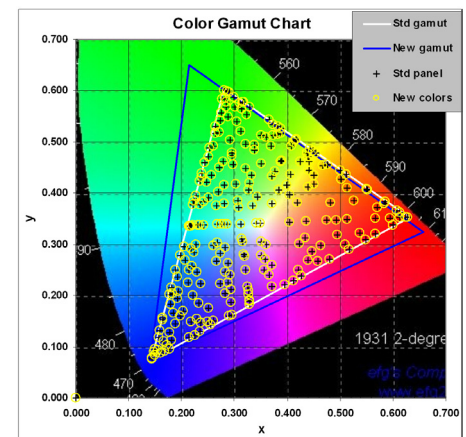
COLOR CORRECTION TECHNOLOGY (CCT)

NDSsi's Color Correction Technology (CCT) is a proprietary dynamic color calibration solution. Pixel-by-pixel color response correction is performed in real-time, resulting in a display that conforms to the BT.709 HDTV color standard. The clinical benefit for surgeons is superior color consistency across all displays, no matter which operating room they are installed in, or which cart they are on.

Without Color Correction Technology



With NDSsi Color Correction Technology



Corporate Headquarters

5750 Hellyer Avenue
San Jose, CA 95138 (USA)
Tel: 408 776 0085
Toll Free: 866 637 5237
Email: info@ndssi.com

Europe

Nijverheidscentrum 28
2761 JP Zevenhuizen (ZH)
The Netherlands [EC REP](#)
Tel: + 31 180 63 43 56
Email: info-EMEA@ndssi.com

Asia Pacific

Takanawa Kaneo Bldg., 6F
3-25-22 Takanawa
Minato-ku Tokyo, Japan, 108-0074
Tel: + 81 3 5475 1835
Email: info@ndssi.jp